

Style Acre
Supporting people with learning disabilities



Active Travel Project

Routes



to the

Tea Room



Bus Route



Go to **Orchard Centre** or
Didcot Parkway area



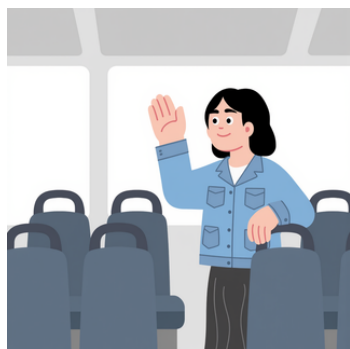
Find a bus stop for the **94** or
94A bus (**Oxford Bus**
Company)



Get on the bus **towards**
Blewbury / Wantage



Stay on the bus for about **20**
minutes



Get off at:
Westbrook Street (Blewbury)
or nearby stop

Bus Route



Walk 5–10 minutes to the tea room (towards Savages Garden Centre)

Cycle Route



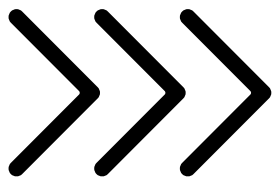
Leave **Didcot** via **Wantage Road** (A4130 direction briefly)



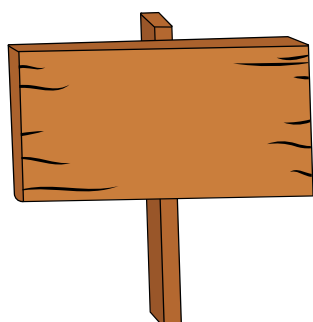
Turn **right** towards **East Hagbourne**



Cycle through the village

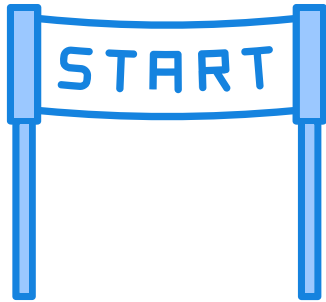


Continue to **Blewbury**

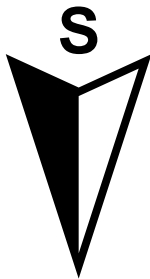


Follow signs to **Savages Garden Centre**

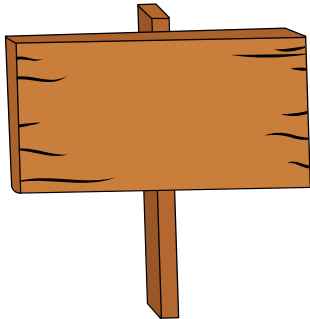
Walking Route



Start in **Didcot Town Centre**



Head **south** towards **New Road / Wantage Road**



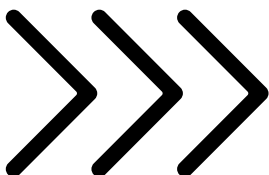
Follow **signs** towards:

- **East Hagbourne**



Walk through:

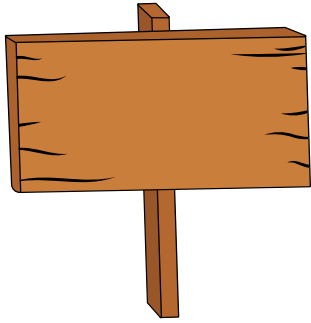
- East Hagbourne village



Continue on the road towards:

- Blewbury

Walking Route



Enter Blewbury and follow signs for:

- London Road / Savages Garden Centre



Arrive at the **Style Acre Tea Room!**