

Style Acre
Supporting people with learning disabilities



Active Travel Project

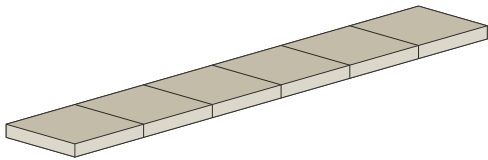
Abingdon



Walking Guide



About the Walk



The walk is **flat**



It is an **easy** walk



The walk is about **1 hour** long



We do **walk near some roads**
so please **be careful**

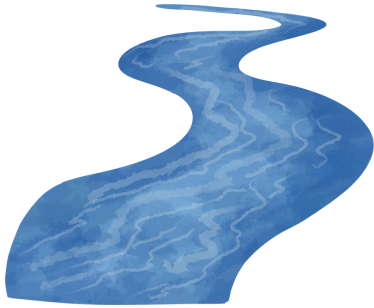


There are **cafes**, and **toilets**
along the walk

About the Walk



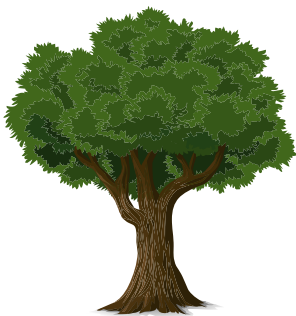
There are **benches**



We will **walk along the River Thames**



There are **some sign posts** towards **Abbey Meadows**



There is **some shade** on the walk **during Southern Town Park**



There are **no hills** on the walk

Things To See



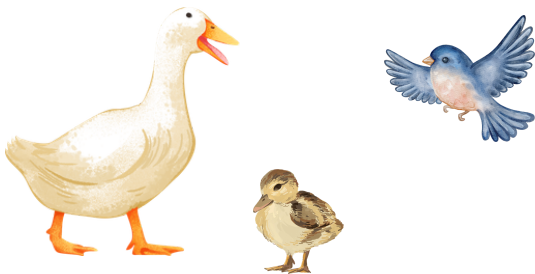
If you're lucky, you may see some hedgehogs



Dogs are often walked nearby



You can explore St Helens Church



There are plenty of geese, ducks and birds



If you're quiet, you might see some squirrels

Bus Journey

X2



Get **on** the **X2 bus** from
Didcot



Get **off** the bus **at Moreland
Gardens, Abingdon**



Walk down **Preston Road** to
Southern Town Park

Map



Route Line

Parking

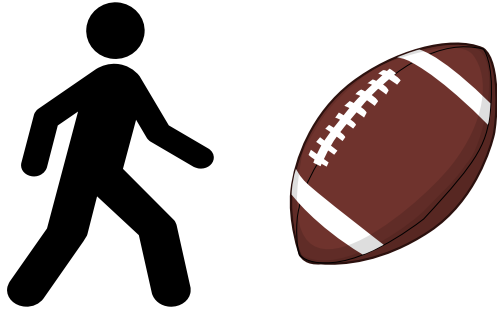


Park in the **free car park** on
Lambrick Way



Lambrick Way Car Park
OX14 5TP

Directions



- When you **leave the car park**, walk up **towards the Rugby Club**.



- Cross the road and **turn left**.
- **Follow the path** next to the **“Hedgehog Trail”** sign.



- Go into **Southern Town Park**.
- Follow the **main path**.



- **Follow the path**.
- Look for the **big blue arch** with **“Southern Town Park”** on it.



- Walk out of the **big blue arch**.
- Keep walking on **Lambrick Way**.

Directions



- **Keep walking** along **Preston Road**.



- Turn left on **Wilsham Road**



- Walk along **Wilsham Road**.
- You will be next to the **River Thames**.



- At the **end of the path** on **Wilsham Road**, turn **right**.
- Walk through **Margaret Brown Gardens**. This is a **short cut**.

Directions



- Walk through the **Church Yard** until you reach **St Helens Church**



- Once you have gone past the church, **turn right** towards **West St Helen Street**



- **Continue** walking up **West St Helen Street** until you reach the **High Street**

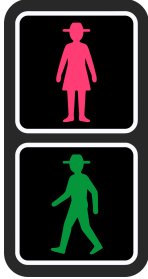


- Turn **right** onto the High Street. Keep walking until you reach **Bury Street**.



- Turn **left on Bury Street** towards Starbucks and the cafe seating area.

Directions



Walk under the walkway by R&R Cafe. Use the **pelican crossing** to cross the road.



After you've crossed, turn right and walk along **Stert Street** until you **pass the Missing Bean cafe and St Nicholas Church**



At St Nicholas Church, **turn left straight away.**



After you turn left, you will see an **archway**.
Walk under the archway towards **Abbey Close**.



When you see the **Old Abbey House Hotel** in front of you, **turn right** onto **Abbey Close**.

Directions



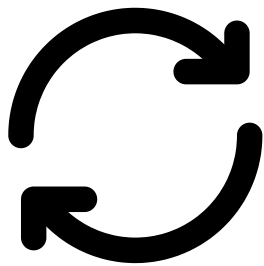
Further up on **Abbey Close**, on your **left**, go into **Trendell's Garden** through the walled gate.



Keep on **walking along the path** until you are in the formal gardens



Keep walking into the open green space. When you enter, look to your left. You will see the Bust of Queen Victoria.



Go all the way around the garden.

Walk back to the Queen Victoria statue.



Walk **back through the formal gardens** the same way you came.

Directions



Exit through the **Trendell's Garden** walled gates



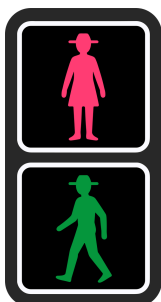
Turn right onto Abbey Close. Walk past the Old Abbey House Hotel.



Go under the arches by St Nicholas Church. Turn right at the end of the path



Continue along Stert Street and go past the Missing Bean



Use the pelican crossing on **Stert Street** to cross the road.

Directions



Walk **under the walkway** by
R&R Cafe.
Go past Starbucks.



Turn **left** onto **Bury Street**



At the end of **Bury Street**, turn
right onto the **High Street**



Walk **along** the **High Street**.
Stop when you reach **West St
Helen Street**.
Turn **left** down **West St Helen
Street**



Walk along the **River Thames**
on St Helens Wharf.

Directions



Turn **left** onto **Wilsham Road**.



Walk along **Wilsham Road** until you **reach Preston Road**.
Turn **right** onto **Preston Road**.



Keep walking down **Preston Road**.
Turn **left** onto **Lambrick Way**.



Continue walking down **Lambrick Way** until you see the **blue arches again**, and **enter Southern Town Park**



At the end of **Southern Town Park**, **cross the road to the car park**.
You have finished the route!