

# Style Acre

Supporting people with learning disabilities



## NEWSLETTER AUGUST 2016

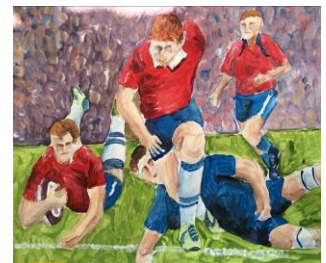
### Mural competition winner

Alongside our recent welcome card competition, there was also a contest to design a mural for the Style Acre Cabin next to our offices at Howbery Park. Since the park is situated by the River Thames and its surrounding countryside, this was the theme for the competition, which was judged by Howbery Park Estates. First prize went to **Kate Nixon** who will now see her lovely nautical design reproduced on the outside of the cabin. Many congratulations Kate!



Kate's jaunty sailboats are set to transform the plain dark green of the cabin.

The quality of the entries was very high. Second place was awarded to **Linda Windridge** for her charming fishes design and **Darryl Jones** came third with his Wittenham Clumps scene. **Dick Prior** submitted a wonderful rugby picture which, though not within the brief of this competition, nonetheless received a well deserved commendation.



### Channel 4 volunteers at T2



From time to time we've been lucky enough to welcome groups of corporate volunteers who have given us practical help with jobs like painting and gardening. On 1<sup>st</sup> July, T2 hosted a group of volunteers from **Channel 4**. This was not about making a TV programme but about spending the day doing fun activities including a scavenger hunt, cake baking & decorating, a make-and-share lunch and even a fashion show using items from our charity shop. Many thanks to Channel 4's volunteers for making it such an enjoyable day.

## Ice Skating - on wheels!



Here we have Witney & Carterton tenants Sonia, Sally and Geraint with their support staff Janice, Kim and Maria, trying out skating on a trip to the local ice rink.

Everybody had such a great time gliding around the ice that this is likely to become a regular activity.

## Dogs for Good Fun Day



Geraint and Sally had a great day out at Stoneleigh Park Warwickshire, at the Dogs for Good Fun Day on 30<sup>th</sup> July. They really enjoyed meeting lots of dogs and watching all the events going on, especially the Dogs for Good demonstration. Here they are pictured right, checking out the police dogs!



## Family Social Evening

We held our first family social on a lovely summer evening at The Royal Oak in Dicot. Whilst only a small number turned up everyone agreed it was most enjoyable and should become a regular event in our Style Acre calendar.

It was good to have time to chat and get to know each other in an informal setting. Some people dined, some just had drinks. We talked about our connections to Style Acre and the people in our lives that Style Acre support. We all have different situations and it was useful to be able to share advice and information, but it was also nice to get to know fellow parents and carers on a personal level. Whilst we chatted the younger ones had their own social evening too and seemed to be very happy judging by the laughter from their table!



Philippa Rallings and Chris Burrows from Style Acre were there for the first hour and we found out about their roles in the organisation and ways in which we could help Style Acre.

We will be holding another social evening in about 3 months' time, so look out for the date in newsletters and emails and do come along to join us. It will give you the opportunity to meet other people who share and understand your situation, make new friends, get useful advice and most importantly have a really pleasant evening!"

**Jane Dimascio**



## Social Group outings



Making the most of the local waterways and the long summer days, the Social Group has enjoyed some **boat trips** recently. Pictured left are members of the group who took a trip up the river Thames from Benson to Dorchester in June.



In July, things were a bit more 'hands on' when another boat trip was taken, this time on a **canal barge** between Hungerford and Great Bedwyn. Pictured here is James taking a turn at the helm, and all hands putting some muscle into opening a lock gate.



## National Motorcycle Museum

Regardless of whether you might have been a mod or a rocker or neither, a visit to the **National Motorcycle Museum** is a must! Social Group members had a fascinating day there browsing the 1000 plus machines on show. The museum at Solihull has the largest collection of British motorcycles in the world, from well-known brands like Triumph, to lesser known makers like McEvoy, Excelsior and Torpedo. 170 manufacturers are represented in all, spanning three centuries



## Warwick Castle

An unfortunately soggy Thursday in July found the Social Group immersed in all things mediaeval as they toured **Warwick Castle**, including its gruesome dungeons. They bumped into this fair maid and her knight in shining armour, complete with horse decked out and ready for jousting!

## Green fingered Geraint



Whether you have space for a large fruit and vegetable garden or just a window box with some home-grown herbs, we can all enjoy producing our own fresh ingredients for the dining table.

Geraint has been growing some fine specimens of tomatoes and beans in self-contained tubs. Here he is making sure the plants have plenty of water. He's looking forward to enjoying his home grown veggies very soon.

## Tea Room Summer Fete, Sunday 14<sup>th</sup> August 10.30-2.30

Style Acre  
Supporting people with learning disabilities

Tea Room Summer Fete  
Sunday 14<sup>th</sup> August  
Style Acre Tea Room, Savages, Blewbury  
10:30 – 2:30

BBQ, Raffle, tombola, stalls, games,  
music, cake competition, bouncy  
Castle and much more!

All money raised will go towards our Tea Room to help to  
enhance the opportunities for the people we support

For more information or to have a stall contact Chris:  
[cburrows@styleacre.org.uk](mailto:cburrows@styleacre.org.uk) or call 01491 827593

Style Acre  
Supporting people with learning disabilities

Blewbury Tea Room Charity  
Cake competition!  
Sunday 14<sup>th</sup> August

Enter your best cake, at our Tea Room  
Summer Fete, for a chance to win some  
great prizes!

- Suggested £2 donation to enter your cake for the competition
- Enter your cake in advance by contacting Chris via email: [cburrows@styleacre.org.uk](mailto:cburrows@styleacre.org.uk) or telephone 01491 827593
- All cakes will be sliced & sold to raise funds for the Style Acre Tea Room
- Children will have the chance to decorate a cup cake!

Competition will take place at our  
Tea Room Summer Fete, at  
Savages The Nurseries, London Rd,  
Blewbury, Didcot OX11 9HB – 10:30  
– 2:30pm

Please come and join us for our summer fete. With a BBQ (by local butchers Calnans), bouncy castle, mini-tennis, inflatable boxing ring, tombola, face-painting, hook-a-duck, jewellery, book and craft stalls, raffle and a cake competition, there really will be something for everyone! We are raising funds to provide much needed additional storage and kitchen

improvements to support our hard-working tea room staff, volunteers and those we support gaining work experience. Our Tea Room is at Savages Garden Centre, The Nurseries, London Road, Blewbury, OX11 9HB

**Philippa Stannard**

Head of Fundraising, Marketing, Community Development



## Style Acre Summer Walk

**Style Acre**  
Supporting people with learning disabilities

**Style Acre Summer Walk!**

**Saturday 10<sup>th</sup> September**  
**Starting at T2 Didcot, 10:30am**  
5 Abingdon Rd, Didcot OX11 9BL

Find out more about Style Acre on this walking tour, where you will be shown around our Didcot community hub by people we support, followed by a walk along the Ridgeway to the Style Acre Tea Room in Blewbury for lunch.

There will be some pop-up surprises along the way by people we support and lots of opportunities to learn about our work.

**Tickets are £10**  
Price does not include lunch at the Tea Room

To sign-up and for more details contact Chris at [cburrows@styleacre.org.uk](mailto:cburrows@styleacre.org.uk) or on 01491 827593

Charity No: 1101626



Another date for your diary is the Style Acre Summer Walk, to be held on 10<sup>th</sup> September.

Find out more about Style Acre on this walking tour, where you will be shown around our Didcot community hub by people we support, followed by a ramble along the old railway line walk to the Style Acre Tea Room in Blewbury for lunch. There will be some pop-up surprises along the way by people we support and lots of opportunities to learn about our work. Tickets are £10.

More details on the flier opposite, or contact Chris Burrows.

## Amanda's poem

*Acknowledge me now  
Know and understand me now*

*Know my needs  
Respect my thoughts  
Note my feelings*

*Now  
With understanding and perhaps a little love*

*I can know me too*

By T2 user **Amanda Jones**

## Art on display at Henley

Turnstyle art teachers **Janet Lueck** and **Mike MacGregor** will have their work on display in August when they join with two other artists for an exhibition entitled *Paper and Canvas* at The Old Fire Station Gallery in Henley-on-Thames. Well worth a visit, and full details can be found below.

### The Old Fire Station Gallery Henley on Thames



Andrea Brailsford



Janet Lueck



Mike MacGregor



Neil Marchant

### **Paper and Canvas: An Exhibition by Andrea Brailsford, Janet Lueck, Mike MacGregor and Neil Marchant**

**Thursday 18 August to Tuesday 23 August 2016**

Open Thursday, Friday, Monday, Tuesday 10.30am-3.30pm

Saturday 10am-5pm, Sunday 10am-4pm

**Private View Sunday August 21 at 12.30**

Link [www.henleytowncouncil.gov.uk/The-Old-Fire-Station-Gallery.aspx](http://www.henleytowncouncil.gov.uk/The-Old-Fire-Station-Gallery.aspx)